



## Northbeck House

Darlington DL1 1RA

Offers In The Region Of £72,000





This footer paragraph is an example only and should not be relied upon as complying with current legislation. These particulars, whilst believed to be accurate are set out as a general outline only for guidance and do not constitute any part of an offer or contract. Intending purchasers should not rely on them as statements of representation of fact, but must satisfy themselves by inspection or otherwise as to their accuracy. No person in this firms employment has the authority to make or give any representation or warranty in respect of the property.



# Northbeck House

Darlington DL1 1RA



- One Bedroom
- Tastefully Decorated
- Council Tax Band A

- North Road/Town Centre
- Designed To High Standard
- EPC Rating

- Lounge/kitchen
- Communal Terrace Area
- SOLD WITH SITTING TENANT PAYING £350 pcm

SOLD WITH SITTING TENANT PAYING £350 PCM

A neat and tidy one bedroom apartment situated very close to the town centre being tastefully decorated and designed to a high standard.

In brief the accommodation comprises of: Entrance Hallway with storage facilities, Lounge/Kitchen, Bedroom, Bathroom/WC. There is a communal terrace area with bin store facilities.

## Entrance Hall

With storage cupboard, intercom system, electric storage heater, double storage unit with plumbing connections for an automatic washing and washer.

## Lounge/Kitchen

12'11" x 12'3" (3.94 x 3.73)

Situated to the front. With laminated flooring, double glazed window, electric storage heater. KITCHEN AREA: with a quality range of wall, floor and drawer units with contrasting work surfaces with integrated fridge and freezer, integrated oven and hob with overhead extractor unit and stainless steel sink unit.

## Lounge

## Bedroom 1

8'0" x 12'3" (2.44 x 3.73)

Situated to the front. With double glazed window, fitted robes with hanging and storage space and matching bedside cabinet.

## Bathroom

With a white suite comprising: panelled bath with overhead shower, pedestal wash hand basin, low level wc, part tiled walls, heated towel rail and slate tiled flooring.

## Exterior

The property has a communal terraced area with bin storage facilities to the rear within a lockable unit,

## Council Tax Band

Band A

## Note

IMPORTANT NOTE TO PURCHASERS: We endeavour to make our sales particulars accurate and reliable, however, they do not constitute or form part of an offer or any contract and none is to be relied upon as statements of representation or fact. The services, systems and appliances listed in this specification have not been tested by us and no guarantee as to their

operating ability or efficiency is given. All measurements have been taken as a guide to prospective buyers only, and are not precise. Floor plans where included are not to scale and accuracy is not guaranteed. If you require clarification or further information on any points, please contact us, especially if you are travelling some distance to view. Fixtures and fittings other than those mentioned are to be agreed with the seller. We cannot also confirm at this stage of marketing the tenure of this house

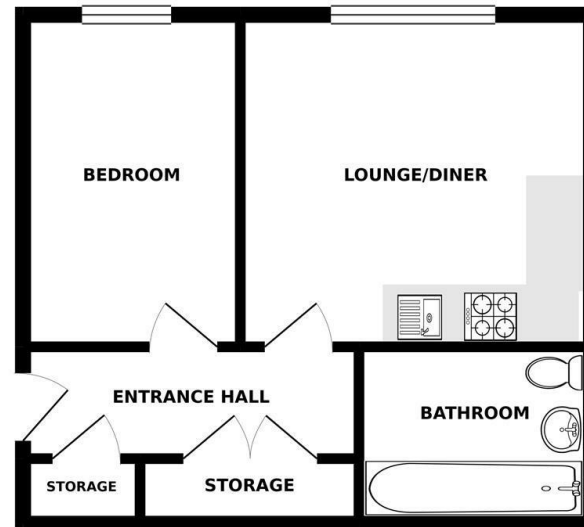
## Tenure

This property is Leasehold  
125 year Lease from 29/9/2006

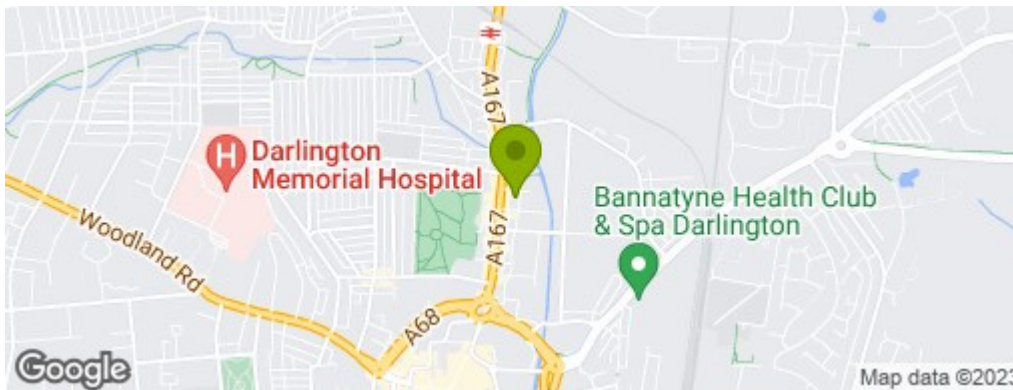
## Photos

Some photos have been taken prior to marketing

## GROUND FLOOR



Whilst every attempt has been made to ensure the accuracy of the floorplan contained herein, measurements of doors, windows, rooms and any other items are approximate and no responsibility is taken for any error, omission or misstatement. This plan is for illustrative purposes only and should be used as such by any prospective purchaser. The services, systems and appliances shown have not been tested and no guarantee as to their operability or efficiency can be given.  
Made with Metrepx 10/2/19



## Property Information

**01325 363858**

45 Duke Street, Darlington, County Durham, DL3 7SD  
[sales@venturepropertiesuk.com](mailto:sales@venturepropertiesuk.com)